



STARTUP+GROW

Welcome to your E-Community: providing practical resources to help you start and grow your business. Apply for loan funds or access other capital to startup or expand, work with qualified professionals to address your specific business questions, or access a statewide network of specialized business resources at low or no cost.

Funding opportunities available to qualifying for-profit businesses in the E-Community

ALL businesses eligible to access resources & professional assistance

For more information or to begin applying for a loan:
(620) 227-9501 or www.dodgedev.org

Joann Knight

phone: 620.227.9501

jknight@dodgedev.org

www.dodgedev.org



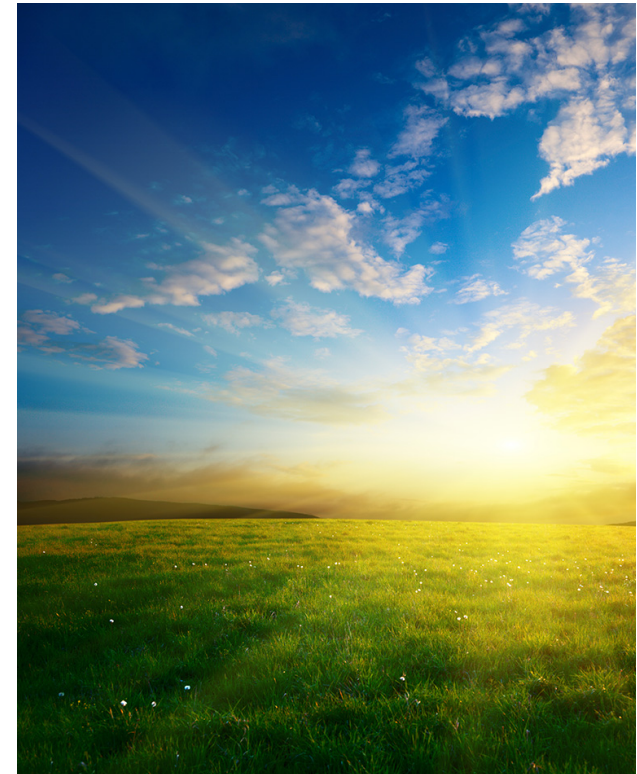
Resources to Start &
Grow Your Business

www.networkkansas.com

E Entrepreneurship
Community
Partnership

A NetWork Kansas Entrepreneurial Program

FORD COUNTY



**Access economic, education,
and expertise resources to start
and grow a successful business**



EXPERTISE, ECONOMICS, EDUCATION RESOURCES TO START + GROW

Owning a business comes with many challenges; and many rewards. Whether you're just starting up or are an experienced entrepreneur, we're here to help you tackle some of the challenges so that you can reap more rewards. An E-Community has made a commitment to cultivating an entrepreneurial environment and has developed connections to resources to help local entrepreneurs start and grow businesses - including a locally controlled loan fund. Startup and grow together.

Strong Businesses

Businesses are the backbone of a strong community. Building strong businesses is not possible without a resource infrastructure that allows startups, expansions, and high-growth businesses to access the economic, educational, and expert resources they need to be successful. We can connect you to additional resources to help your business thrive.

Resources to Help

- Low-interest E-Community loans for startups and existing businesses
- Business coaching, advice and mentorship
- Access to educational resources, like classes and workshops
- Custom assistance for your business needs

Business Funding

- Apply for a low-interest loan through the E-Community to fund your business
- E-Community loans are intended to be paired with loans from financial institutions, personal investment, and financing from NetWork Kansas E-Community partners (ex. Certified Development Companies, Local Revolving Loan Funds, Main Street programs, etc.) to complete a funding package

Use of Funds:

- Purchasing a building
- Purchasing equipment for a business
- Purchasing land for a business
- Working capital
- Construction or renovation on a business
- Other projects

Guidelines:

- E-Community funding cannot exceed 60% of the total funding package
- E-Community loan maximum of \$75,000
- Must obtain required matching funds

Who Qualifies:

- Business must be located in the E-Community
- Must be a for-profit business
- Additional qualifications may apply

Apply for a Loan

Obtain an application by contacting your E-Community representative. Schedule an appointment to discuss the right next steps to take. Whether you need help finishing your business plan or filling out your loan application, there are resources to help.

Application Steps

- Download an application for funding
- Complete loan application, including all requested documentation and submit
- You will be contacted regarding the status of your application

Scoring Criteria

- Financial soundness
- Owner/Operator experience
- Business plan
- Projected growth and economic impact
- Business development partnerships
- Quality of life impact
- Owner/3rd party funding
- Community commitment

Get Started Today

Contact us today to request an E-Community loan application, learn about other business resources, or get involved with the E-Community.