

Q & A

What is a "Tax Rebate"??

It is a refund of the property taxes that are paid on the actual value added to a property due to the improvements made. It does not affect your current property taxes. You're still required to pay all property taxes, but you will be rebated a percentage of the increase that is due to the improvements if the project meets all requirements.

What type of improvements qualify?

New construction, rehabilitation, alterations, and additions are considered qualified improvements.

What kind of improvements will increase the assessed value?

New construction, additions and major rehabilitations will increase the assessed value. Repairs generally will not increase the assessed value unless there are several major repairs or improvements completed at the same time.

Is there an application fee?

Yes, there is a \$200 application fee. Fees are subjects to change. Checks only.

Can I apply for the rebate more than once?

An applicant is entitled to apply anytime there is a building permit for a separate project that meets the minimum investment. You may apply only once for any one project.

Process

- Obtain an application form from the Dodge City/Ford County Development Corporation
- Obtain a building permit from Development Services
- Submit Part 1 of the NRP application to the Ford County Appraisal Office with the application fee.
- County Appraiser conducts an appraisal
- Submit Part 2 of the NRP application to the Ford County Appraisal Office by December 1 of the year construction is complete.
- County Appraiser conducts a new appraisal and determines the new valuation
- County Appraiser will notify the County Treasurer to begin the rebate.

Contacts

Development Services & Inspections

806 N. Second Ave.
Dodge City, KS 67801
(620) 225-8105

Ford County Appraisals Office

100 Gunsmoke Street
Dodge City, KS 67801
(620) 227-4570

Neighborhood Revitalization Program

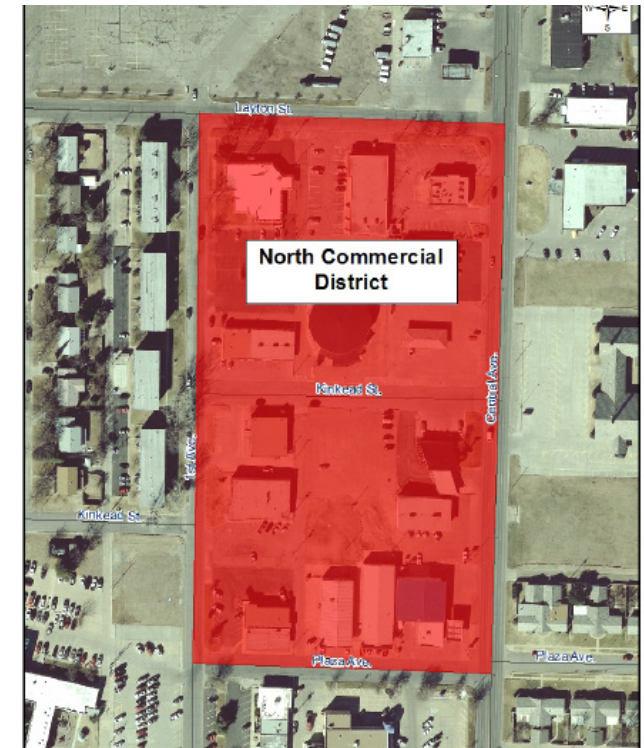
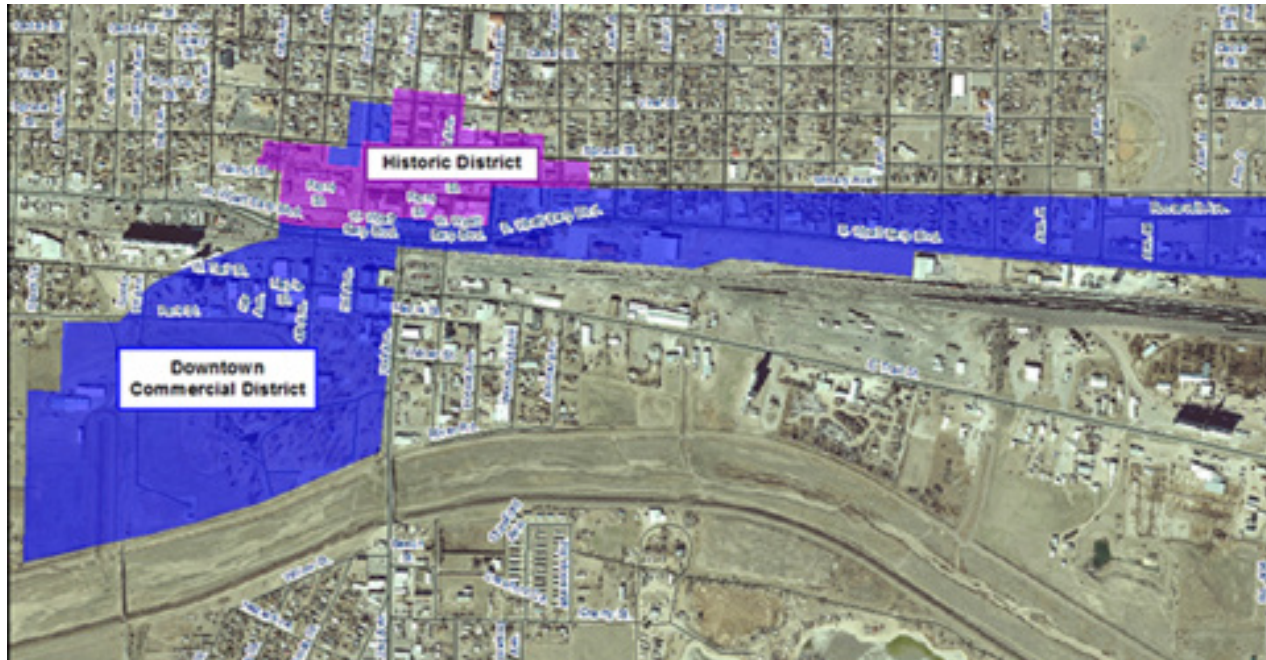
Commercial Incentive



*Applications can be obtained at the
Dodge City/Ford County
Development Corporation
101 E. Wyatt Earp
PO Box 818
Dodge City, KS 67801
(620) 227-9501*

Rebate & Map

This program is designed to give property owners in the designated NRP area the opportunity to receive a 10-year tax rebate on the increased value of the property. The incremental rebate is applied to the additional property taxes that are incurred as a result of rehabilitating or constructing new commercial property.



Qualifications

- \$15,000.00 minimum investment
- 5% minimum increase in assessed valuation
- Property owner must file, and have approved, an application with the County Appraiser before construction begins.
- Property must be zoned appropriately
- Property and applicant must be current on property taxes, utility billings and applicable special assessments
- Improvements must conform with the City of Dodge City codes and building permit requirements
- Project must be complete before the rebate can be applied

District	Rebate	Years
Downtown Commercial	100% pro-rated (declines 10% each year)	10
Historic	100%	10
North Commercial	100% pro-rated (declines 10% each year)	10